

# Mouse CDH17 Protein; His Tag

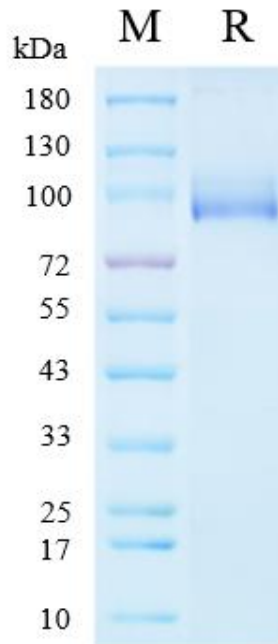
## Product Information

<b>Product Name</b>	Mouse CDH17 Protein; His Tag
<b>Storage temp.</b>	Store at $\leq -70^{\circ}\text{C}$ , stable for 6 months after receipt. Recommend to aliquot the protein into smaller quantities for optimal storage. Please minimize freeze-thaw cycles.
<b>Catalog# / Size</b>	<b>GM-75418RP-100 / 100 <math>\mu\text{g}</math></b> <b>GM-75418RP-1000 / 1 mg</b>

## Protein Information

<b>Alternative Names</b>	Cadherin-17,HPT-1,LI-cadherin
<b>Source</b>	Mouse CDH17 Protein; His Tag (GM-75418RP) is expressed from human 293 cells (HEK-293). It contains AA Phe26-Met786 (Accession # Q9R100-1). This protein carries a His tag at the C-terminus.
<b>Purity</b>	> 95% as determined by SDS-PAGE
<b>Endotoxin</b>	< 1 EU/ $\mu\text{g}$ , determined by LAL gel clotting assay
<b>Predicted Mol Mass</b>	86.3 KDa
<b>Formulation</b>	Supplied as a 0.2 $\mu\text{m}$ filtered solution of PBS, pH7.4.
<b>Description</b>	Cadherin-17 is a protein that in humans is encoded by the CDH17 gene. This gene is a member of the cadherin superfamily, genes encoding calcium-dependent, membrane-associated glycoproteins. The encoded protein is cadherin-like, consisting of an extracellular region, containing 7 cadherin domains, and a transmembrane region but lacking the conserved cytoplasmic domain. The protein is a component of the gastrointestinal tract and pancreatic ducts, acting as an intestinal proton-dependent peptide transporter in the first step in oral absorption of many medically important peptide-based drugs. The protein may also play a role in the morphological organization of liver and intestine.

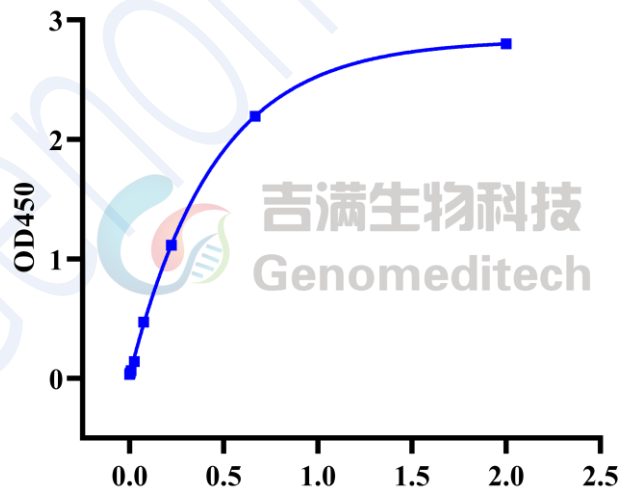
## SDS-PAGE



This protein on SDS-PAGE under reducing (R) condition. The gel was stained overnight with Coomassie Blue. The purity of the protein is greater than 95%.

## Bioactivity-ELISA

**Mouse CDH17 Protein; His Tag, ELISA**  
3  $\mu\text{g}$  of Monoclonal Anti-CDH17 Antibody per well



**Mouse CDH17 Protein; His Tag Conc. ( $\mu\text{g}/\text{ml}$ )**

Anti-CDH17 Antibody (Catalog # GM-75321AB) was immobilized at 30  $\mu\text{g}/\text{ml}$  (100  $\mu\text{L}/\text{well}$ ). Increasing concentrations of Mouse CDH17 Protein; His Tag (Catalog # GM-75418RP) were added.